

ENVIROLINE® SERIES FREE-STANDING TWO-DOOR SINGLE ACCESS ENCLOSURES

Application

Designed to house a variety of electrical and electronic controls and instruments. Provisions for optional surface mounting or rack mounting of almost any type of equipment. Provides protection from dust, dirt, water and oil. For outdoor applications a drip shield and drain holes are required. The enclosures are extra deep for applications requiring more interior space.

Construction

- 0.104" carbon steel.
- Removable and interchangeable doors.
- Concealed hinges.
- Seams continuously welded and ground smooth.
- Strong, rigid construction with stiffeners welded on backs of single access boxes.
- Lifting eyes for easy handling.
- Black zinc die cast keylocking/padlocking handle.
- 3-point latching mechanism.
- Latch rods have ramp shoes for easier door closing.
- Flange trough collar around all sides of door opening.
- Removable center post.
- Removable print pocket.
- Mounting channels welded horizontally on sides of interior body at top, bottom and middle for mounting optional panels or rack mounting angles.
- Hole plugs provided to seal holes in bottom of enclosure.
- Pour in place oil and water resistant gasket.
- Ground stud on door and body.
- Provisions for light kit.

Accessories - See Pages 144-151

Finish

ANSI-61 gray powder coated inside and out.
Optional subpanels powder coated white.

IS4 Industry Standards

NEMA Type 3R, 4, 12 & Type 13
UL Listed Type 3R, 4 & 12
CSA Type 3R, 4 & 12
IEC 60529 IP66

***To maintain Type 3R listing, drainage is required. Install equally rated drainage device or drill a 1/8 to 1/4 inch hole in the bottom center of the enclosure, approximately 1 inch from the right, and 1 inch from the left for drainage, use listed rain-tight or wet location hubs. Drip shield over the door is recommended for all outdoor applications.

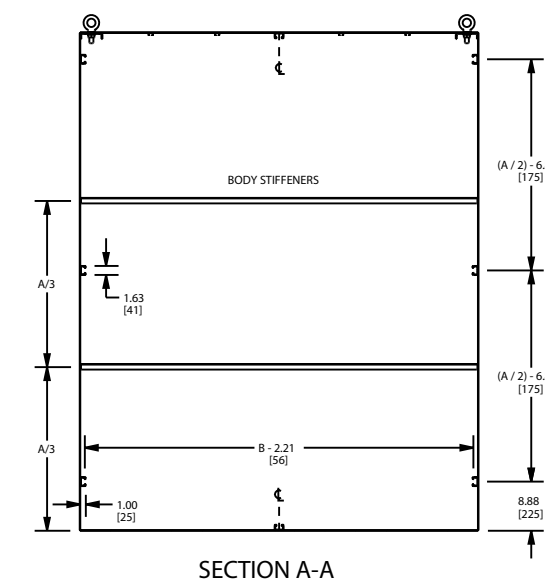
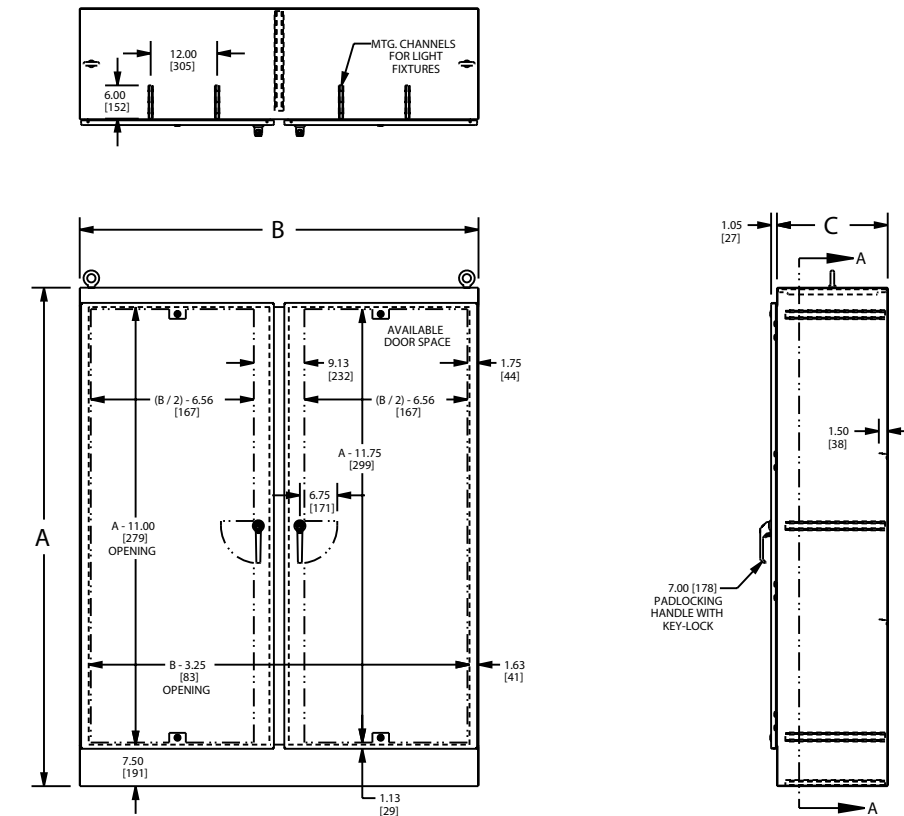
Enclosure Product Code A2

Catalog No.	Height (A)	Width (B)	Depth (C)	Industry Standard
SCE-60EL4818FSD	60.00	48.00	18.00	IS4
SCE-72EL4818FSD	72.00	48.00	18.00	IS4
SCE-72EL4824FSD	72.00	48.00	24.00	IS4
SCE-72EL6018FSD	72.00	60.00	18.00	IS4
SCE-72EL6024FSD	72.00	60.00	24.00	IS4
SCE-72EL6036FSD	72.00	60.00	36.00	IS4
SCE-72EL7218FSD	72.00	72.00	18.00	IS4
SCE-72EL7224FSD	72.00	72.00	24.00	IS4
SCE-90EL4820FSD	90.00	48.00	20.00	IS4
SCE-90EL7220FSD	90.00	72.00	20.00	IS4
SCE-90EL7224FSD	90.00	72.00	24.00	IS4
SCE-90EL7236FSD	90.00	72.00	36.00	IS4

Part numbers that contain the letters "EL" with doors that are over 30 inches wide have quarter turn latches on the center of the door top and bottom.



ENVIROLINE® SERIES FREE-STANDING TWO-DOOR SINGLE ACCESS ENCLOSURES TECHNICAL DATA



LATCH NOTE:
OMIT CENTER LATCH TOP AND BOTTOM OF DOOR WHEN DOOR WIDTH IS <= 30.00" [762]